

CBD SERVICE MODULE

INDUSTRIAL FANS & BLOWERS

■ AN INTRODUCTION TO CB DOCTOR – SERVICE MODULE

■ ANNUAL MAINTENANCE CONTRACT (AMC)

■ INSTALLATION & COMMISSIONING

■ OVERHOULING & REVAMPING

■ TROUBLE SHOOTINGS

■ TESTING & DIAGNOSIS

■ ON SITE BALANCING

■ LASER ALIGNMENT

■ TRAINING



AN INTRODUCTION OF CB DOCTOR SERVICE

CB DOCTOR - SERVICE DIVISION is a separate department. We are engaged in **ERECTION & COMMISSIONING, ANNUAL MAINTENANCE, TROUBLE SHOOTINGS, ON SITE BALANCING AND VIBRATION DIAGNOSIS, SPARE PARTS, REVAMPING AND TRAINING.**

Rotary equipment requires specialized handling and care. A smoothly running industrial fan is critical for optimum, efficient and trouble free operation of the plant.

We have a strong and dedicated team of well experienced engineers, Analysis Experts and Maintenance team based in Ahmedabad. Who are capable to solve any types of problems, rectifications & resolution of Complete Range of **Fans and Blowers, Heavy Duty Fans for Cement, Steel, Fertilizer, Petrochemical, Power, Chemical, Nuclear and Ship Building Industries** and a complete range of **Axial Fans** including **Jet Fans** for tunnels and **Underground Car Park Ventilation Fans**

We are committed to offer the best technical solution to the industry with most optimum and economic solution and dedication toward complete **customer satisfaction.**



CB DOCTOR VENTILATORS PVT. LTD.

PLOT NO. 3607 – 3608, PHASE – IV, VATVA
GIDC AHMEDABAD, GUJARAT INDIA, PIN -
382445

ANNUAL MAINTENANCE CONTRACT (AMC)

The Fans / Rotary equipment require the good engineering practices such followings to ensure the fan & its bearing life. The scope of work as mentioned below are covered in the every each visit tenner

Analysis of blowers and identify the fan health to ensure for continuous running

- Check bearing vibration, temperature, abnormal sound
- Check lubrication & health status of each bearing
- Check all joints mounting status
- Check alignment status
- Check Dynamic balancing status
- To ensure a correct running of the rotating machine it is advisable to carry out periodical inspection by skilled personnel
- We have several mobile facilities equipped with the most advanced instruments for the analysis and control, manned by our long-experienced skilled technicians.
- All record shall be maintained in the form of history books



INSTALLATION & COMMISSIONING

- Turn-key" erection of any type of rotating machine and accessories.
- Supervision and control during installation and start-up.
- We can guarantee accurate manufacture of "blowers and fans" and
- Project management until delivery of the plant to the final customer.
- These activities are carried out by skilled and qualified personnel using
- The most advanced and up-to-date systems and instrumentation.
- The control of alignment is carried out by laser while control of
- Vibration levels and balancing of rotating parts is executed using the most advanced FFT analysers
- We are committed to submit all the report time sheet, daily activities report and finally commissioning report



OVERHAULING & REVAMPING

- Complete overhauling of old fans at our workshop or at workshops and close to the installation site.
- Technical upgradation of old or out-of-order fans.
- Improvement of fan performance by modification of some components.
- Old fans performance can be improved by introducing the latest technological innovations.
- This is made following the advice of our technical department which has a long experience in this type of work.



TROUBLE SHOOTINGS

- Rectification & resolution of high vibration
- Rectification & resolution of high Bearing temperature
- Rectification & resolution of high Fan noise
- Rectification & resolution of insufficient Fan flow rate
- Rectification & resolution of insufficient Fan static pressure
- Rectification & resolution of motor overload / tripping



TESTING & DIAGNOSIS

- Bearing vibration testing & Analysis
- Bearing temperature testing & Analysis
- Fan noise testing & Analysis
- Fan flow rate testing
- Fan static pressure testing.



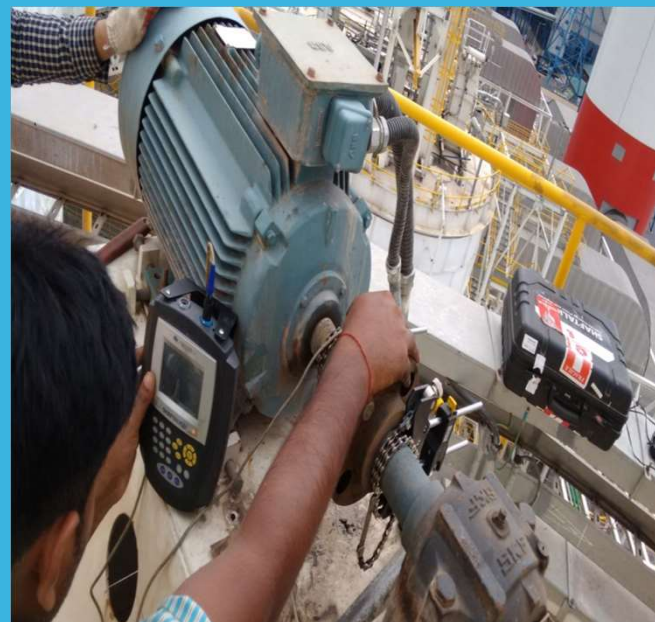
ON SITE BALANCING

- On site situ balancing by using the most advance balancing instrument
- Balancing grade BV 2.5 to achieve the vibration level as per the ISO 10816 -2003 / 14694 -2003



LASER ALIGNMENT

- All types of couplings joints alignment by using the most advance laser shaft align instrument
- Motor shaft foot alignment by using the most advance instrument
- Solo joint coupling alignment
- Train joint couplings alignment
- High accuracy alignment tolerance / up to the 10 micron



TRAINING

- Courses to train the correct fan installation, start-up & Operation
- Courses to train the correct fan maintenance.
- Courses to train the correct use of the electronic equipment's for control and rotating machine.
- Courses to train the trouble shootings for various problems with rotating machine
- We can organize training courses to your personnel at your premises.
- The purpose of these courses, prepared in accordance with the customer is to train technicians to work in total autonomy



OUR SCOPE OF SERVICES

- CEMENT PLANT
- STEEL PLANT
- FERTILIZER PLANT
- PETROCHEMICAL PLANT
- POWER PLANT
- CHEMICAL PLANT
- NUCLEAR POWER PLANT
- CERAMICAS PLANT
- TEXTILE PLANT
- VENTILATIONS FAN

OUR DEDICATED TEAM

- QUALIFIED & TRAINED EXPERTS / ENGINEERS IN THE FAN INDUSTRIES
- WELL TRAINED & EXPERIENCED TECHNICIANS IN THE FAN INDUSTRIES



OUR CONTACTS

Tel: 79 - 40268700, 701 Ext 705

Mob: +91- 9426752941

E-MAIL ID 1 : service@cbdoctor.co.in

E-MAIL ID 2 : chandrakesh@cbdoctor.co.in

OUR SERVICES FOR ALL OVER INDIA AND ABROAD

THANKING YOU FOR
CHOOSING OUR
SERVICES

WE ASSURE OUR
BEST SERVICES
AT ALL TIME



CENTRIFUGAL FANS
HEAVY DUTY FANS
AXIAL FANS
JET FANS

MR. SAURABH S. MEHTA
DIRECTOR

CB DOCTOR VENTILATORS PVT. LTD.

PLOT NO. 3607 – 3608, PHASE – IV, VATVA
GIDC AHMEDABAD, GUJARAT INDIA, PIN -
382445